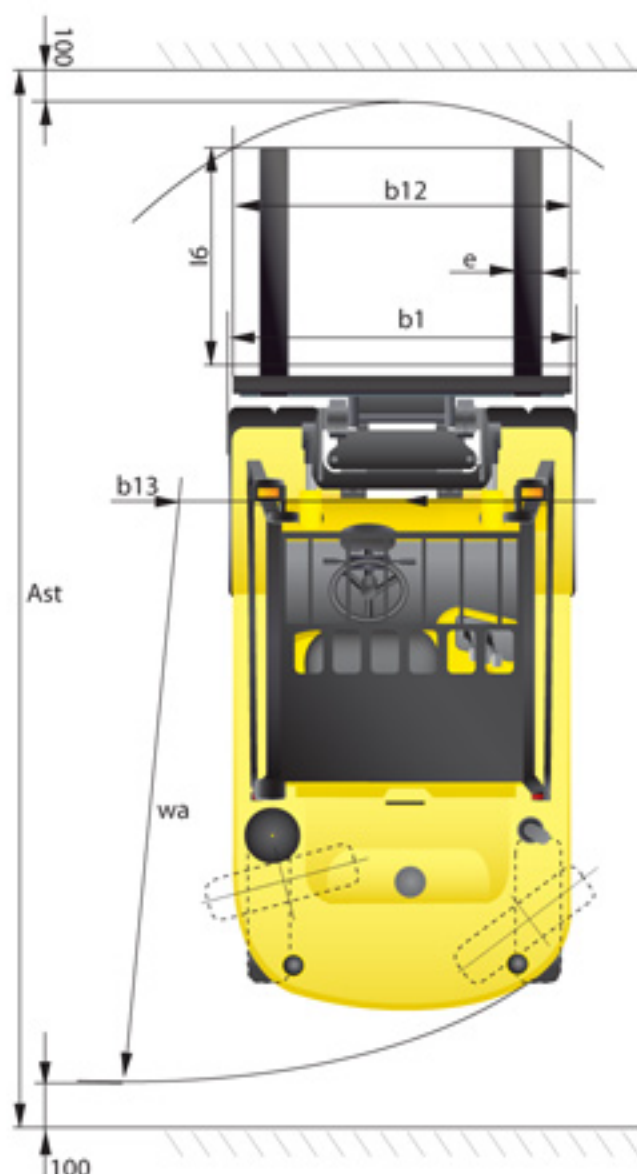
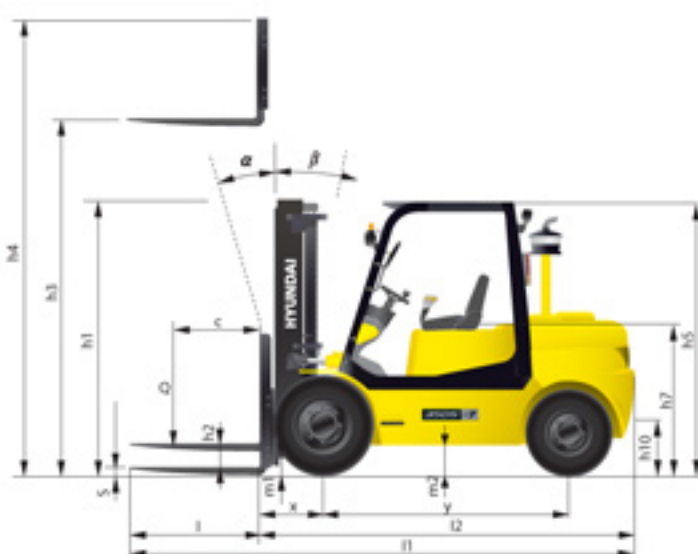


## Dimension



## Specification

Identification							
1.1	Manufacturer	Hyundai	Hyundai	Hyundai	Hyundai	Hyundai	Hyundai
1.2	Manufacturer's type designation	3SD-7	3SDS-7	40D-7	40DS-7	45D-7	45DS-7
1.3	Drive: electric (battery or mains), diesel, petrol, fuel gas, manual	DIESEL	DIESEL	DIESEL	DIESEL	DIESEL	DIESEL
1.4	Type of operation: hand, pedestrian, standing, seated, order-pick	seated	seated	seated	seated	seated	seated
1.5	Load capacity / rated load	Q (t)	3.5	3.5	4.0	4.0	4.5
1.6	Load center distance	c (mm)	600	600	600	600	600
1.8	Load distance, center of drive axle to fork	x (mm)	561	561	561	561	561
1.9	Wheelbase	y (mm)	2,000	2,000	2,000	2,000	2,000
Weights							
2.1	Service weight	kg	5,888	5,914	6,458	6,484	6,873
2.2	Axle loading, loaded front/rear	kg	8,359 / 1,029	8,375 / 1,039	9,283 / 1,174	9,299 / 1,185	10,067 / 1,306
2.3	Axle loading, unloaded front/rear	kg	2,829 / 3,059	2,845 / 3,069	2,964 / 3,494	2,979 / 3,505	2,957 / 3,916
Wheels, Chassis							
3.1	Tires: solid rubber, superelastic, pneumatic, polyurethane	pneumatic	pneumatic	pneumatic	pneumatic	pneumatic	pneumatic
3.2	Tires size, front (φ x width)	8.25-15-14	8.25-15-14	7.50-16-12	7.50-16-12	7.50-16-12	7.50-16-12
3.3	Tires size, rear (φ x width)	7.00-12-12	7.00-12-12	7.00-12-12	7.00-12-12	7.00-12-12	7.00-12-12
3.5	Wheels, number front x rear (x=driven wheels)	2×2	2×2	4×2	4×2	4×2	4×2
3.6	Track width, front	mm	1,162	1,162	1,312	1,312	1,312
3.7	Track width, rear	mm	1,140	1,140	1,140	1,140	1,140
Basic Dimensions							
4.1	Mast / fork carriage tilt forward / backward	degrees	8/10	8/10	8/10	8/10	8/10
4.2	Lowered mast height	h1 (mm)	2,235	2,235	2,220	2,220	2,220
4.3	Free lift	h2 (mm)	120	120	120	120	120
4.4	Lift height	h3 (mm)	3,000	3,000	3,000	3,000	3,000
4.5	Extended mast height	h4 (mm)	4,236	4,236	4,236	4,236	4,246
4.7	Overhead load guard (cab) height	h5 (mm)	2,240	2,240	2,240	2,240	2,240
4.8	Seat height / standing height	h7 (mm)	1,100	1,100	1,100	1,100	1,100
4.12	Coupling height	h10 (mm)	364	364	364	364	364
4.19	Overall length	l1 (mm)	4,140	4,140	4,195	4,195	4,405
4.20	Length to face of forks	l2 (mm)	3,070	3,070	3,125	3,125	3,185
4.21	Overall width	b1 (mm)	1,400	1,400	1,776	1,776	1,776
4.22	Fork dimensions (hook type)	s / e / l (mm)	50×122×1,070	50×122×1,070	50×150×1,220	50×150×1,220	50×150×1,220
4.23	Fork carriage ISO 2328, class / type A,B	class	class III	class III	class III	class III	class IV
4.24	Fork-carriage width	b12 (mm)	1,300	1,300	1,600	1,600	1,600
4.31	Ground clearance, loaded, under mast	m1 (mm)	170	170	155	155	155
4.32	Ground clearance, centre of wheelbase	m2 (mm)	215	215	200	200	200
4.33	Aisle width for pallets 1,000x1,200 crossways	Ast (mm)	4,531	4,531	4,591	4,591	4,651
4.34	Aisle width for pallets 800x1,200 lengthways	Ast (mm)	4,731	4,731	4,791	4,791	4,851
4.35	Turning radius	Wa (mm)	2,770	2,770	2,830	2,830	2,890
4.36	Smallest pivot point distance	b13 (mm)	1,008	1,008	1,008	1,008	1,008
Performance Data							
5.1	Travel speed, loaded / unloaded	km/h	25.9 / 28.0	24.4 / 26.4	25.2 / 27.0	23.8 / 25.4	24.9 / 27.0
5.2	Lift speed, loaded / unloaded	mm/s	550 / 600	570 / 600	540 / 600	560 / 600	530 / 600
5.3	Lowering speed, loaded / unloaded	mm/s	500 / 450	500 / 450	500 / 450	500 / 450	500 / 450
5.5	Drawbar pull, loaded / unloaded	N	37,373 / 37,804	36,760 / 36,130	38,128 / 36,348	37,690 / 35,950	40,050 / 38,118
5.7	Gradient performance, loaded / unloaded	%	44.0 / 26.2	43.1 / 26.2	39.8 / 25.2	38.9 / 25.2	38.6 / 23.6
5.9	Acceleration time, loaded / unloaded (10m)	sec	-	-	-	-	-
5.10	Service brake		hydraulic	hydraulic	hydraulic	hydraulic	hydraulic
Engine							
6.1	Engine manufacturer / type	HMC/D4DD	MHI/S6S-DT	HMC/D4DD	MHI/S6S-DT	HMC/D4DD	MHI/S6S-DT
6.2	Engine power acc. to ISO 1585	kW	70.0	64.7	70.0	64.7	70.0
6.3	Rated speed	1/min	2,300	2,200	2,300	2,200	2,300
6.4	No. of cylinder / cubic capacity	anzl	4 / 3,907	6 / 4,996	4 / 3,907	6 / 4,996	4 / 3,907
6.5	Fuel consumption acc. to VDI cycle	l / h	-	-	-	-	-
Other Details							
8.1	Type of drive control	Torque Converter 2/2	Torque Converter 2/2	Torque Converter 2/2	Torque Converter 2/2	Torque Converter 2/2	Torque Converter 2/2
8.2	Operating pressure for attachments	bar	150	150	150	150	150
8.3	Oil volume for attachments	l/min	-	-	-	-	-
8.4	Sound level at driver's ear according to DIN 12 053	db(A)	87	87	87	87	87
8.5	Tow coupling, type DIN		-	-	-	-	-



■ Some of the photos may include optional equipment.

FORKLIFT TRUCKS Environmentally - Friendly

# 35/40/45DS-7

# 35/40/45D-7

**HYUNDAI**  
HEAVY INDUSTRIES CO.,LTD.

**GLOBAL MACHINERY**

ООО «Глобал Машинери» - Официальный дистрибьютор техники Hyundai Heavy Industries Co., Ltd. в России

ООО «Глобал Машинери»  
125502, Россия, г. Москва, улица Петрозаводская,  
дом 9, корп.2, офис 8  
тел./факс: +7(495) 775-76-55, +7(495) 644-76-74  
info@gm-rus.org, www.pogruzchik-hyundai.ru

**HYUNDAI**  
HEAVY INDUSTRIES CO.,LTD.

We build a better future



**35/40/45DS -7**

**35/40/45D -7**

## New criterion of Forklift Trucks

Hyundai introduces a new line of 7-series diesel forklift trucks. Excellent power and performance makes your business more profitable.



■ Some of the photos may include optional equipment.



# High Power & Performance

## Powerful Engine Mitsubishi S6S-DT Engine

The six cylinders turbo-charged engine is built for power, reliability and economy. This engine meets EPA tier II and EU stage II emission regulation.

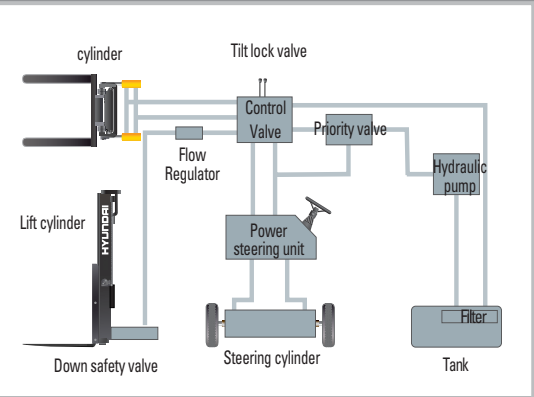


## Hyundai D4DD Engine



## State-of-the-art hydraulic system

The latest large-capacity hydraulic system reacts quickly during operation, and a low-noise control valve increases both efficiency and durability.



## Ability of best, The new master on the job-site!

Smooth running, efficient and ergonomically designed, 35/40/45D-7, 35/40/45DS-7 series are made to meet your needs.



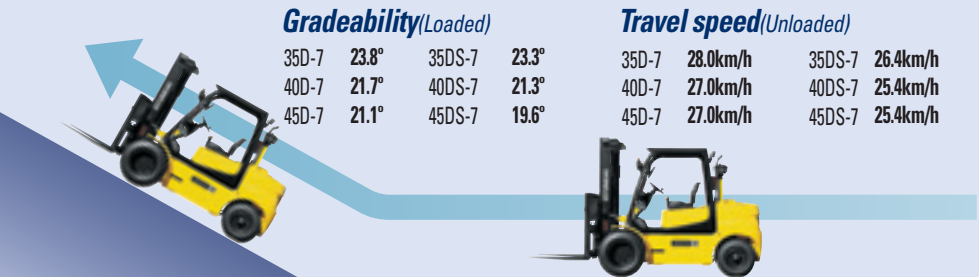
■ Some of the photos may include optional equipment.

## Fast and stable performance

Being able to quickly raise and lower the mast, as well as tilt it forward and backward, provides the best operational conditions during unloading. When the truck is fully loaded, mast lowering speed is carefully controlled to ensure safety by the down control valve.

## Faster Travel Speed & Gradeability

The powerful high-output engine provides greater acceleration, better gradeability and faster travel speed on any tough terrain or slope.



## Increased mast tilting angle

Utilizing the mast tilting angle of 8 degrees forward and 10 degrees backward, the operator can safely and rapidly perform loading and unloading jobs.



## Wet disc brake system

The adoption of Wet disc type brake improves brake performance. Brake pedal effort is improved about 45% at 20% slope and Wet disc brakes have service intervals 5 times longer than conventional.



## Fully hydrostatic power steering

A hydraulic steering system always guarantees smooth and flexible steering, preventing overrun and kick-back.



## Key-locking fuel cap

Increased security on job sites with locking fuel cap, plus an increased capacity fuel tank for less down time.





Adjustable steering wheel

Steering wheel can be adjusted by a lever on the right-hand side for the most comfortable operator position.



Easy and safe shift lever

A single lever on the left side of the steering column gives the operator fast, easy control of speed and direction. The engine can be started in case of neutral position of this lever.



Multi-function switch lever

Multi-functional switch lever gives easy access to lights and horn.



Quick Response of Operating Control Levers

Only minimal operator's effort is required for precise, safe and productive control.



Some of the photos may include optional equipment.

Ergonomics driving space design!

A design based on human engineering relieves fatigue and increase operator's efficiency.



Ergonomically positioned pedals

Based on human engineering, the accelerator, brake and inching pedals are optimally positioned for convenience while operating the equipment.



Cup holder & console box

Additional storage spaces are located inside the operating space for operator's convenience.



New high visibility for safe operation

The operator is able to work with increased safety and accuracy due to a wider view mast.

Operator friendly gauges and water-resistant monitor panel



- |   |  |
|---|--|
| ① Parking brake lamp                        | ⑨ Water separator lamp (35/45DS, MHI Engine) |
| ② Directional indicators                    | ⑩ Pre-heater indicator                       |
| ③ Fuel warning lamp                         | ⑪ Water temperature gauge                    |
| ④ Engine oil warning lamp                   | ⑫ Fuel gauge                                 |
| ⑤ Transmission oil temperature warning lamp | ⑬ Hour meter                                 |
| ⑥ Battery charging warning lamp             | ⑭ Engine check lamp(35/45D, Tier2 Engine)    |
| ⑦ Air cleaner filter warning light          | ⑮ Seat belt warning                          |
| ⑧ Working light indicator                   | ⑯ OPS warning(35/45DS, MHI Engine)           |

Easily adjustable suspension seat

An attractive and adjustable seat, based on a human engineering design, provides great comfort, safety and durability.



The latest anti-vibration and shock absorbing system

The state-of-the-art hydraulic suspension cab system, using hydraulic and anti-vibration rubber insulator, is installed between the guard and truck frame to reduce the source of vibration and noise while driving. This not only reduces operator's fatigue but also increases safety.





Strong overhead guard

The safety overhead guard meets EEC and ANSI regulations and protects the operator during hazardous jobs.



Parking Brake

Toggle type parking brake requires less efforts from the operator to set.



Highly Durable  
Electric Shift-Power Transmission

Powershift transmission provides fast travel speed and quiet travel under any heavy load condition, and boosts work efficiency.

Danger-free through  
high durability!

Safety and durability are priorities in the design of the equipment.



■ Some of the photos may include optional equipment.

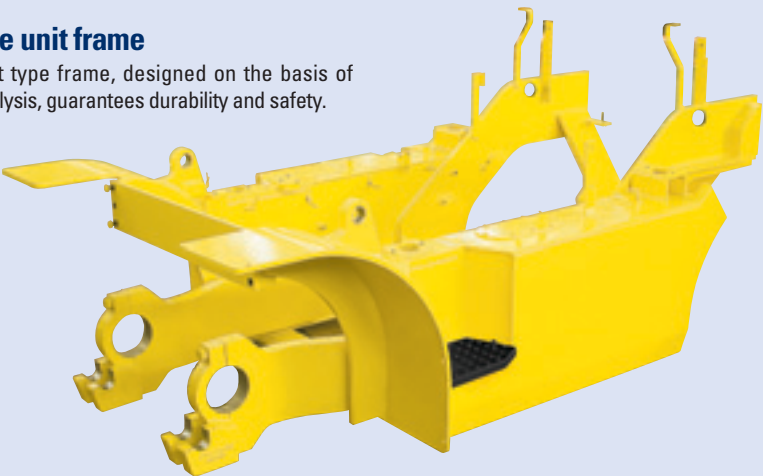


Large footboard & Handle

Wide "open" step offers convenience and safety when entering and exiting truck.

Heavy duty single unit frame

Heavy duty single unit type frame, designed on the basis of accurate structural analysis, guarantees durability and safety.



Fuel Tank Safety Valve

Integrated Safety Check Valve shuts off fuel supply in the unlikely condition of a truck overturn.



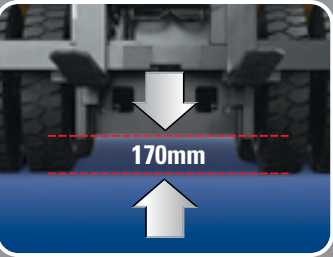
Expansion bellows

The expansion bellows absorbs vibration and reduces noise generated from the exhaust gas system and also extends the life cycle of exhaust gas system.



Bright, protected headlights  
and rear working light

Bright, protected headlights and rear working light are positioned for exceptional visibility.



Ground clearance

The engine and transmission are assembled horizontally and positioned high in the frame to protect expansive components during operation on rugged surface.



Durability Easy Maintenance



Electrically Monitored Air Filter

Air cleaner sensor alerts the operator of a restricted air filter and allows replacement before damage.



Easy Maintenance oil check

The T/M oil level can be checked easily without any disassembly.



Brake fluid reservoir

Highly visible, easily accessible reservoir makes for quicker daily inspections.



An accessible, compact fuse box for easy inspection



Centralized design for easy service!

An ideal arrangement of component parts ensures easy access and convenience for maintenance.



Easy Change Air Cleaner

The air filter is readily accessible for cleaning or replacement.



Visible precleaner

Efficient, accessible pre-cleaner provides for longer engine life.



Maintenance free battery



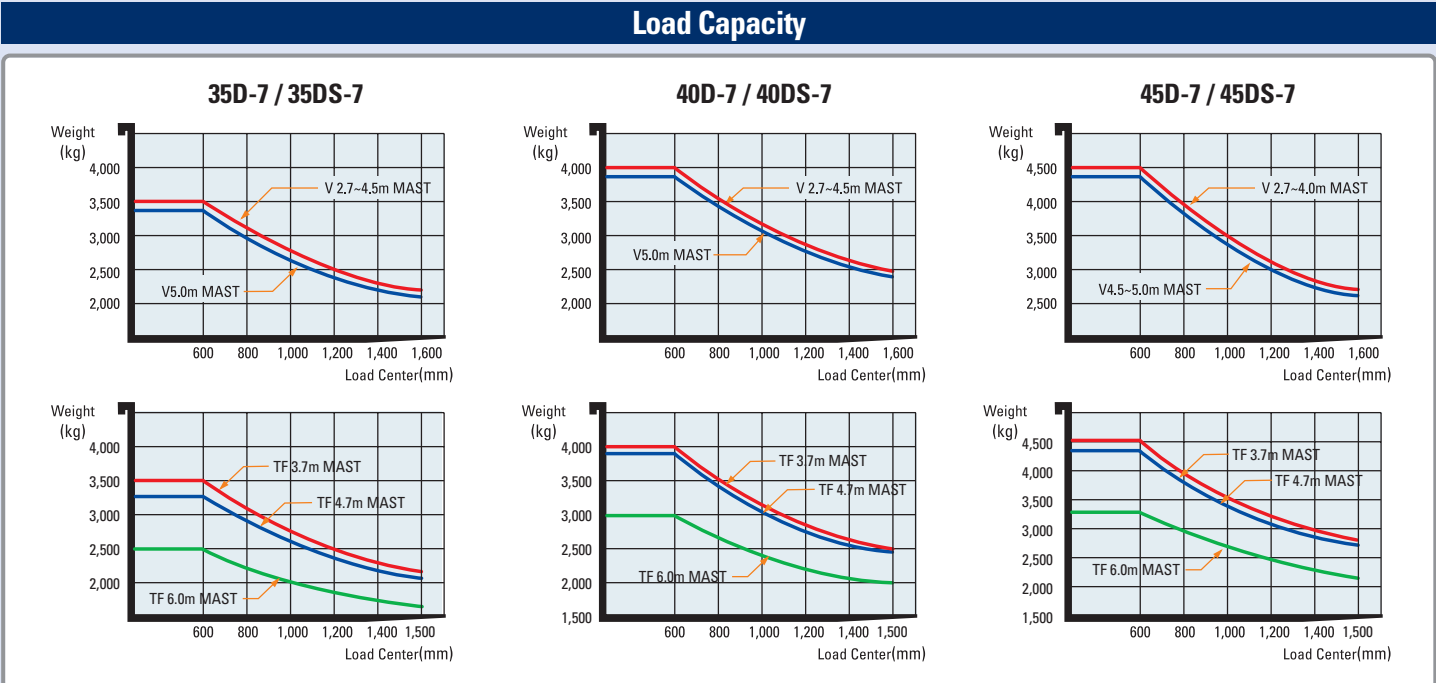
Easy-to-change radiator



Engine oil condition check

Mast Specification (35/40/45D-7, 35/40/45DS-7)																				
MAST TYPE		Maximum Fork Height (mm)	Overall Height(mm)						Free Lift(mm)				Load Capacity At 600mm (24 in)LC						Tilt Angle (deg)	
			Lowered (mm)		Extended(mm)				35 / 40D-7 35 / 40DS-7		45D-7 45DS-7		35D-7 35DS-7		40D-7 40DS-7		45D-7 45DS-7			
					35 / 40D-7 35 / 40DS-7	45D-7 45DS-7	W/o Load Backrest	W/Std Load Backrest											W/o Load Backrest	W/Std Load Backrest
			Single	Double	W/o Load Backrest	W/Std Load Backrest	W/o Load Backrest	W/Std Load Backrest	W/o Load Backrest	W/Std Load Backrest	W/o Load Backrest	W/Std Load Backrest	Single	Double	Single	Double	Single	Double	Fwd	Bwd
SIMPLEX	V270	2,700	2,240	2,240	3,565	3,936	3,585	3,946	120	120	120	120	3,500	3,500	4,000	4,000	4,500	4,500	8	10
	※ V300	3,000	2,240	2,240	3,865	4,236	3,885	4,246	120	120	120	120	3,500	3,500	4,000	4,000	4,500	4,500	8	10
	V330	3,300	2,385	2,370	4,165	4,536	4,185	4,546	120	120	120	120	3,500	3,500	4,000	4,000	4,500	4,500	8	10
	V350	3,500	2,535	2,520	4,365	4,736	4,385	4,746	120	120	120	120	3,500	3,500	4,000	4,000	4,500	4,500	8	10
	V370	3,700	2,635	2,620	4,565	4,936	4,585	4,946	120	120	120	120	3,500	3,500	4,000	4,000	4,500	4,500	8	10
	V400	4,000	2,845	2,830	4,865	5,236	4,885	5,246	120	120	120	120	3,500	3,500	4,000	4,000	4,500	4,500	8	10
	V450	4,500	3,095	3,080	5,365	5,736	5,385	5,746	120	120	120	120	3,500	3,500	4,000	4,000	4,400	4,450	6	6
DUPLEX	V500	5,000	3,345	3,330	5,865	6,236	5,885	6,246	120	120	120	120	3,350	3,400	3,850	3,900	4,200	4,300	6	6
	VF280	2,800	2,240	2,240	3,682	4,021	3,702	4,072	1,258	919	1,238	868	3,500	3,500	4,000	4,000	4,500	4,500	6	8
	VF300	3,000	2,240	2,240	3,882	4,221	3,902	4,272	1,358	1,019	1,338	968	3,500	3,500	4,000	4,000	4,500	4,500	6	8
TRIPLEX	VF315	3,150	2,325	2,310	4,032	4,371	4,052	4,422	1,448	1,109	1,428	1,058	3,500	3,500	4,000	4,000	4,500	4,500	6	8
	TF370	3,700	2,240	2,240	4,607	4,946	4,627	4,956	1,149	810	1,114	784	3,500	3,500	4,000	4,000	4,500	4,500	6	6
	TF400	4,000	2,240	2,240	4,907	5,246	4,927	5,256	1,249	910	1,214	884	3,500	3,500	4,000	4,000	4,500	4,500	6	6
	TF430	4,300	2,240	2,240	5,207	5,546	5,227	5,556	1,349	1,010	1,314	984	3,450	3,500	4,000	4,000	4,450	4,500	6	6
	TF450	4,500	2,295	2,280	5,387	5,726	5,407	5,736	1,409	1,070	1,374	1,044	3,400	3,450	4,000	4,000	4,400	4,400	6	6
	TF470	4,700	2,385	2,380	5,597	5,936	5,617	5,946	1,499	1,160	1,464	1,134	3,300	3,400	3,900	3,950	4,300	4,350	6	6
	TF500	5,000	2,485	2,470	5,897	6,236	5,917	6,246	1,599	1,260	1,564	1,234	3,200	3,350	3,800	3,850	4,200	4,300	6	6
	TF550	5,500	2,665	2,650	6,397	6,736	6,417	6,746	1,779	1,440	1,744	1,414	2,900	3,250	3,500	3,700	3,900	4,100	6	6
	TF600	6,000	2,845	2,830	6,907	7,246	6,927	7,256	1,959	1,620	1,924	1,594	2,500	3,100	3,000	3,550	3,300	3,950	6	6

※ Standard : Hook-on type fork & carriage / Option : Shaft-on type fork & carriage



- |   |   |   |
|---|---|---|
| <p><b>• CABIN</b><br/>Cabin without Heater / Cabin with Heater</p> <p><b>• FORK(LxWxT)(mm)</b><br/><b>35D</b> : 1,220 × 122 × 50 / 1,370 × 122 × 50 / 1,520 × 122 × 50<br/>1,670 × 122 × 50 / 1,820 × 122 × 50 / 1,970 × 122 × 50<br/><b>40D</b> : 1,220 × 150 × 50 / 1,370 × 150 × 50 / 1,520 × 150 × 50<br/>1,670 × 150 × 50 / 1,820 × 150 × 50 / 1,970 × 150 × 50<br/><b>45D</b> : 1,070 × 150 × 50 / 1,370 × 150 × 50 / 1,520 × 150 × 50<br/>1,670 × 150 × 50 / 1,820 × 150 × 50 / 1,970 × 150 × 50<br/><b>35D(Hook Type)</b> : 1,220 × 122 × 50 / 1,370 × 122 × 50 / 1,520 × 122 × 50<br/>1,670 × 122 × 50 / 1,820 × 122 × 50 / 1,970 × 122 × 50</p> | <p><b>35D(Shaft Type)</b> : 1,220 × 150 × 50 / 1,370 × 150 × 50 / 1,520 × 150 × 50<br/>1,670 × 150 × 50 / 1,820 × 150 × 50 / 1,970 × 150 × 50</p> <p><b>• MAST</b><br/>2/Stage limited free lift / 3/Stage limited free lift</p> <p><b>• OVER SHOE</b><br/>1,800 / 2,000 / 2,200</p> <p><b>• MCV</b> 3-SPOOL / 4-SPOOL / 5-SPOOL</p> <p><b>• SOLID TIRE, NON-MARKING</b></p> <p><b>• SEAT</b>: ARM REST, SEAT BELT</p> <p><b>• REAR WORK LAMP</b></p> | <p><b>• INTERNAL PIPING</b></p> <p><b>• HOSE-REEL</b></p> <p><b>• HAZARD SWITCH</b></p> <p><b>• BEACON LAMP</b></p> <p><b>• MASTER SWITCH</b></p> <p><b>• AOPSS</b> (Abnormal Operator Position Sensing System)</p> |
|---|---|---|