

# 14-18t

## Light Type Internal Combustion Counterbalanced Forklift Truck



**GROS**

# 14-18t

Performance specifications					
Model	Unit	CPCD140-CU-06IIG	CPCD150-CU-06IIG	CPCD160-CU-06IIG	CPCD180-CU-06IIG
Rated capacity	kg	14000	15000	16000	18000
Load center	mm	600			
Power type		Diesel engine			
Lifting speed ( unloaded/loaded )	mm/s	350/300			
(Descending speed unloaded/loaded )	mm/s	380/310			
Max.Traveling speed(loaded/unloaded)	km/h	27/30			
Max. Gradeability(loaded/unloaded)	%	20%			
Tire	Type(front/rear)	4/2 Pneumatic tire			
	Size	12.00-24-20PR			
Battery voltage/capacity	V/Ah	24/120			
Service brake		Gas cap oil- pedal type			
Parking brake		Wet-type multiple disc brake			
Engine	Manufacture Model	Dongfeng Cummins 6BTAA5.9-C170			
	Rated output/ Speed	kW/rpm	127/2200		
	Rated torque/ Speed	Nm/rpm	750/1400		
	Cylinder number		6		
	Displacement	L	5.9		
Transmission gear shift ( front/rear type )		Hydraulic reversing			

### Standard Configuration

Wide view mast	Back-up lamp	Overhead guard	Durable tire with decorative pattern
Standard fork	Hydraulic fork positioner	Fire extinguisher	Tile and adjustable steering column
Steering indicator	Electric horn	Hydraulic oil level gauge	Traction pin
Back-up mirror	Engine oil pressure alarm	Four-piece control valve	High exhaust
Front combination lamp	Charging indicator	Tilt self-lock valve	Air inlet device
Rear combination lamp	Water temperature meter of engine	Flow regulator of lifting oil circuit	Driver's tool
Stopwatch	Neutral indicator	Fully-hydraulic powered steering	
Rotary warning lamp	Electro-hydraulic changing-over	Oil filter of hydraulic oil loop	
Reversing buzzer	Mechanical type air filter obstruction alarm	Standard seat	

### Optional Devices and Accessories

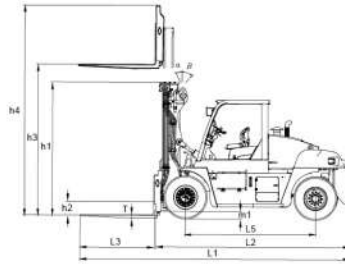
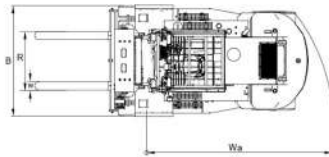
Warm air blower	Floating seat	String rod
Air conditioner	ops service control syste	Hydraulic side shift fork positioner (Pitch adjustment of single fork)
Common solid tyre	User designated color	No trace solid tyre
Cab	Side shifter	



# GROS



a: Clearance  
b: Load center



Performance specifications					
Model	L1	CPCD140	CPCD150	CPCD160	CPCD180
Unit	B	mm			
Overall dimension	h1 Overall length ( with forks )	6270			
	h4 Overall width	2780			
h3	Overall height ( at mast )	3300			
	Overall height ( at works )	4776			
Wheel base		3250			
Lift height ( standard )	L3	3000			
Min. underclearance	W	345			
Fork WB	T Length	1370			
	R Width	200			
	Thickness	85			
α / β	Adjustable range	500-2370			
Min.turning radius(external)		4500			
Mast tilt angle ( fwd/bwd )		6° /12°			

Wide view basic type mast								
Mast type	Max. lifting height ( mm )	Loading capacity (load center600mm) (kg)				Free lift height ( mm )	Mast tilt angle (Fwd/Bwd)	Note
		CPCD140	CPCD150	CPCD160	CPCD180			
M300	3000	14000	15000	16000	18000	3300	6° /12°	Standard type
M350	3500	14000	15000	16000	18000	3550	6° /12°	
M400	4000	14000	15000	16000	18000	3800	6° /12°	
M450	4500	14000	15000	16000	18000	4050	6° /12°	
M500	5000	14000	15000	16000	18000	4300	6° /6°	
M550	5500	13000	14000	15000	17000	4550	3° /6°	
M600	6000	12000	13000	14000	16000	4800	3° /6°	
M650	6500	11000	12000	13000	15000	5050	3° /6°	

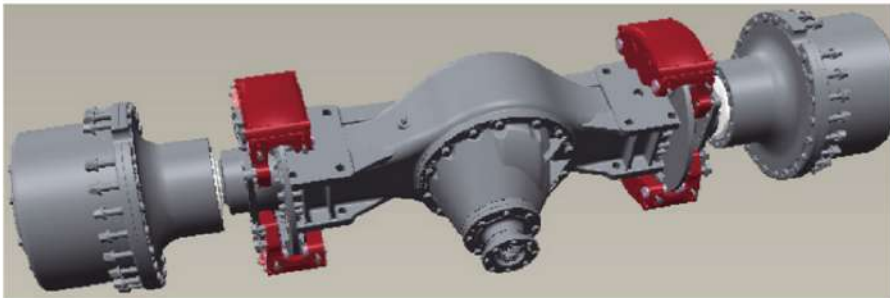
- Our products are constantly updated and improved. Parameters and design are subject to change without prior notice.
- The configuration and color of the products in figures may be different from the actual delivered model. Please in kind prevails.

ANHUI HELI CO., LTD.



### Heavy drive axle

- ▶ The design is suited to special working conditions of forklift by using big wheel edge and small main reducer, ensuring high reliability of drive axle. Equipped with caliper disc brake, it has good performance and high cost-performance.

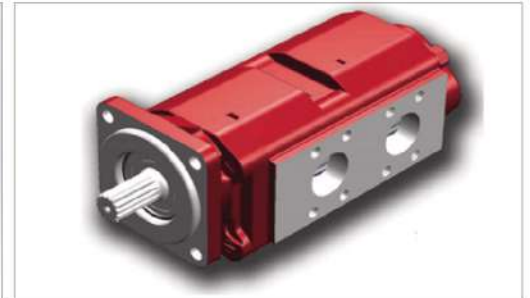
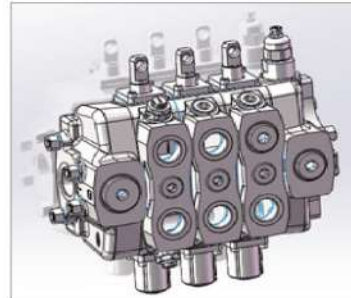


### Excellent Braking Performance

- ▶ The whole vehicle has excellent and reliable braking performance and the service brake and parking brake are operated smoothly and stably under various field conditions.

### Hydraulic system

- ▶ Walvoil Lever-operated integrated type control valve from Italy , PERMCO high pressure gear pump.





## Wide view and High Strength Lifting System

- ▶ Excellent front view which is benefit for the work safety improvement and working efficiency is provide with wide view mast which has proprietary intellectual property and hydraulic fork positioned.

## Engine System

- ▶ Dongfeng Cummins 6BTAA5.9-C170 diesel engine meets China II and its displacement is 5.9L. It has low oil consumption, low noise and stable output power.  
Parameters: 127kw/2200rpm  
750N.m/1400rpm  
Fuel system: Two-stage filtering system meets the requirements of low fuel quality better.



## Gearbox & Torque Converter

### Hydraulic powered direction changing transmission box+ 340 high performance torque converter

- ▶ Electric-hydraulic gear shifting technology
- ▶ High efficient power matching
- ▶ Safe and reliable; low noise

