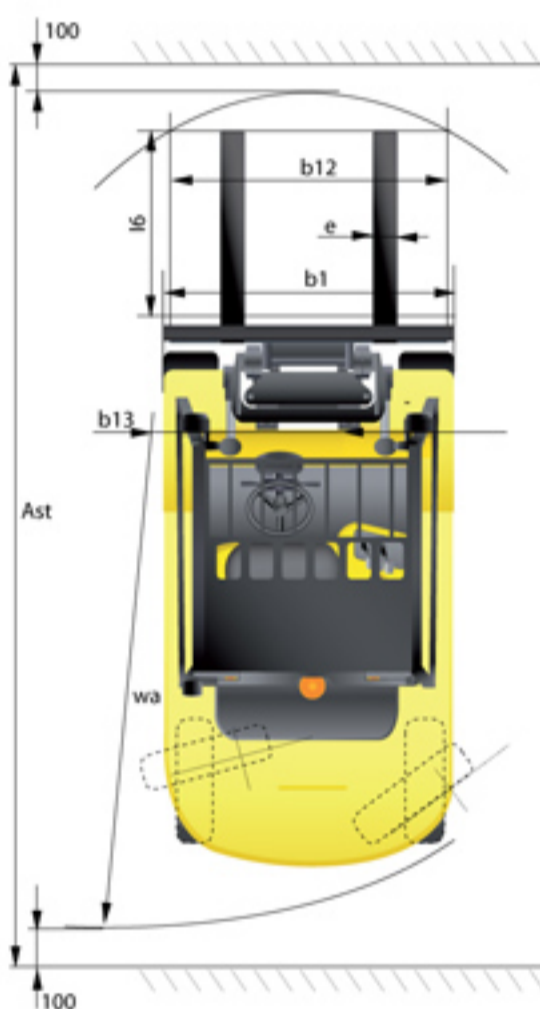
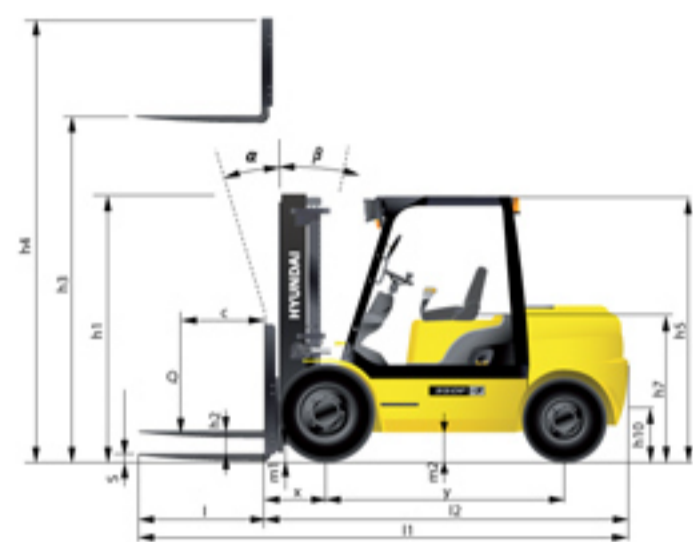


## Dimension



## Specification

Identification					
1.1	Manufacturer	Hyundai	Hyundai	Hyundai	Hyundai
1.2	Manufacturer's type designation	20DF-7	25DF-7	30DF-7	33DF-7
1.3	Drive: electric (battery or mains),diesel,petrol,fuel gas,manual	DIESEL	DIESEL	DIESEL	DIESEL
1.4	Type of operation:hand,pedestrian,standing,seated,order-picker	seated	seated	seated	seated
1.5	Load capacity / rated load	kg 2,000	kg 2,500	kg 3,000	kg 3,300
1.6	Load center distance	c mm 500	500	500	500
1.8	Load distance, center of drive axle to fork	x mm 461	461	464	464
1.9	Wheelbase	y mm 1,650	1,650	1,700	1,700
Weights					
2.1	Service weight	kg 3,604	3,894	4,411	4,823
2.2	Axle loading, loaded front/rear	kg 4,847 / 757	5,579 / 815	6,450 / 961	6,885 / 1,238
2.3	Axle loading, unloaded front/rear	kg 1,683 / 1,921	1,623 / 2,271	1,748 / 2,663	1,713 / 3,110
Wheels, Chassis					
3.1	Tires:solid rubber, superelastic, pneumatic, polyurethane	pneumatic	pneumatic	pneumatic	pneumatic
3.2	Tires size, front(Φ x width)	7.00-12-12PR	7.00-12-12PR	8.15-15-14PR	8.15-15-14PR
3.3	Tires size, rear(Φ x width)	6.00-9-10PR	6.00-9-10PR	6.50-10-12PR	6.50-10-12PR
3.5	Wheels, number front x rear (x=driven wheels)	x2 / 2	x2 / 2	x2 / 2	x2 / 2
3.6	Track width, front	mm 965	965	1,005	1,005
3.7	Track width, rear	mm 980	980	980	980
Basic Dimensions					
4.1	Mast / fork carriage tilt forward / backward(α/β)	degrees 6 / 10	6 / 10	6 / 10	6 / 10
4.2	Lowered mast height	h1 (mm) 2,175	2,175	2,190	2,190
4.3	Free lift	h2 (mm) 155	155	155	155
4.4	Lift height	h3 (mm) 3,300	3,300	3,300	3,200
4.5	Extended mast height	h4 (mm) 4,485	4,485	4,485	4,385
4.7	Overhead load guard (cab) height	h5 (mm) 2,160	2,160	2,180	2,180
4.8	Seat height / standing height	h7 (mm) 1,086	1,086	1,106	1,106
4.12	Coupling height	h10 (mm) 306	306	330	330
4.19	Overall length	l1 (mm) 3,577	3,632	3,738	3,806
4.20	Length to face of forks	l2 (mm) 2,527	2,582	2,688	2,756
4.21	Overall width	b1 (mm) 1,160	1,160	1,230	1,230
4.22	Fork dimensions(hook type)	s / e / l (mm) 1,050x100x45	1,050x100x45	1,050x125x45	1,050x125x45
4.23	Fork carriage ISO 2328, class / type A,B	2A	2A	3A	3A
4.24	Fork-carriage width	b12 (mm) 1,084	1,084	1,084	1,084
4.31	Ground clearance, loaded, under mast	m1 (mm) 114	108	118	115
4.32	Ground clearance, centre of wheelbase	m2 (mm) 185	185	198	198
4.33	Aisle width for pallets 1,000x1,200 crossway(LxW)	Ast (mm) 3,916	3,970	4,066	4,102
4.34	Aisle width for pallets 800x1,200 lengthwa(LxL)	Ast (mm) 4,116	4,170	4,266	4,302
4.35	Turning radius	Wa (mm) 2,248	2,302	2,398	2,434
4.36	Smallest pivot point distance	b13 (mm) 714	714	731	731
Performance Data					
5.1	Travel speed, unloaded	km/h 17.6	17.6	18.5	18.5
5.2	Lift speed, loaded/ unloaded	mm/s 570 / 590	550 / 590	460 / 480	450 / 480
5.3	Lowering speed, loaded/unloaded	mm/s 500 / 450	500 / 450	500 / 450	500 / 450
5.5	Drawbar pull, loaded	kg 2,257	2,275	2,161	2,162
5.7	Gradient performance, loaded/ unloaded	% 40.2 / 34.1	34.6 / 29.4	27.9 / 24.0	25.9 / 22.2
5.9	Acceleration time, loaded/ unloaded(10m)	sec NA	NA	NA	NA
5.10	Service brake	FOOT	FOOT	FOOT	FOOT
Engine					
6.1	Engine manufacturer / type	HMC D48B	HMC D48B	HMC D48B	KUBOTA V3600
6.2	Engine power acc. to ISO 1585	kW 39	39	39	48
6.3	Rated speed	1/min 2,500	2,500	2,500	2,500
6.4	No. of cylinder / cubic capacity	anz/cmf 4 / 2,604	4 / 2,604	4 / 2,604	4 / 2,604
6.5	Fuel consumption acc. To VDI cycle	ℓ / h 2.0	2.2	2.5	2.6
Other Details					
8.1	Type of drive control	power shift	power shift	power shift	power shift
8.2	Operating pressure (system / attach)	bar/cm 200 / 165	200 / 165	200 / 165	200 / 165
8.3	Oil volume	ℓ 30	30	30	30
8.4	Noise	db(A) 80	80	80	80

■ Contact your Hyundai dealer for more information. The machine shown may vary according to International standards.



GLOBAL MACHINERY

ООО «Глобал Машинери»  
125502, Россия, г. Москва, улица Петрозаводская,  
дом 9, корп.2, офис 8  
тел./факс: +7(495) 775-76-55, +7(495) 644-76-74  
info@gm-rus.org, www.pogruzchik-hyundai.ru

ООО «Глобал Машинери» - Официальный дистрибьютор техники Hyundai Heavy Industries Co., Ltd. в России



■ The photograph and the actual equipment may differ in appearance

HYUNDAI DIESEL FORK LIFT TRUCKS Environmentally-Friendly

# 20/25/30/33/35DF-7



We build a better future

20DF/25DF/30DF/33DF/35DF -7

## New criterion of Forklift Trucks

Hyundai introduces a new line of 7series diesel forklift trucks.  
Excellent power and performance makes your business more profitable.



■ The photograph and the actual equipment may differ in appearance.

# High Power & Performance

## Powerful Engine HMC D4BB Engine (20/25/30/33DF-7) 39kW/2,500rpm



Market approved quality of HMC D4BB engine ensures incomparable performance, durability and additional value to the machine, 39kW of the engine is more than enough to suit any work, not just with normal 39kW but with special attachments requiring high power as well (Eu stage III A certified)

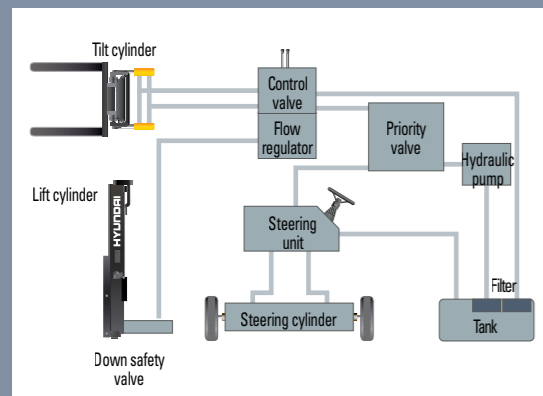
## KUBOTA V3600 Engine (35DF-7) 48kW/2,300rpm



Market approved quality of Kubota V3600 engine ensures incomparable performance, durability and additional value to the machine. 48kW of the engine is more than enough to suit any work, not just with normal 48kW but with special attachments requiring high power as well. (EPA/EU Tier-3 Certified)

### State-of-the-art hydraulic system

The latest large-capacity hydraulic system reacts quickly during operation, and a low-noise control valve increases both efficiency and durability.



*The new master on the job-site!*

Smooth running, efficient and ergonomically designed, 20/25/30/33/35DF-7 series are made to meet your needs.

■ The photograph and the actual equipment may differ in appearance.



### Fast and stable performance

Being able to quickly raise and lower the mast, as well as tilt it forward and backward, provides the best operational conditions during unloading. When the truck is fully loaded, mast lowering speed is carefully controlled to ensure safety by the down control valve.

### Faster travel speed & gradeability

The powerful high-output engine provides greater acceleration, better gradeability and faster travel speed on any tough terrain or slope.



### Increased mast tilting angle

Utilizing the standard mast tilting angle of 6 degrees forward and 10 degrees backward, the operator can safely and rapidly perform loading and unloading jobs.



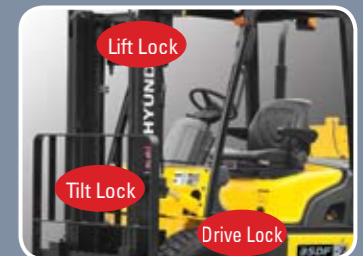
### Wet disc brake system

The wet disc brake system is virtually maintenance free and is enclosed to protect from dust and water.



### Fully hydrostatic power steering

A hydraulic steering system always guarantees smooth and flexible steering, preventing overrun and kick-back.



### OPSS (Operator Presence Sensing System)

Control of mast tilting, lifting and lowering is not possible through operation of the appropriate control when the operator is not in the normal position.(Option)

## Comfortable Operation



### Adjustable steering wheel

Steering wheel with horn button can be adjusted by a lever on the right-hand side for the most comfortable operator position.



### Easy and safe shift lever

A single lever on the left side of the steering column gives the operator fast, easy control of direction.



### Multi-function switch lever

Multi-functional switch lever gives easy access to lights and horn.



### Quick response of operating control levers

Only minimal operator's effort is required for precise, safe and productive control.



■ The photograph and the actual equipment may differ in appearance.

## Ergonomically designed with the operator in mind!

A design based on human engineering relieves fatigue and increase operator's efficiency.



### Ergonomically positioned pedals

Based on human engineering, the accelerator, brake and inching pedals are optimally positioned for convenience while operating the equipment.



### Cup holder & console box

Additional storage spaces are located inside the operating space for operator's convenience.



### New high visibility for safe operation

The operator is able to work with increased safety and accuracy due to a wider view mast.

## Operator friendly gauges and water-resistant monitor panel



- |   |                           |
|---|---------------------------|
| ① Parking brake lamp                        | ⑤ Water separator lamp    |
| ② Directional indicators                    | ⑩ Pre-heater indicator    |
| ③ Fuel warning lamp                         | ⑪ Water temperature gauge |
| ④ Engine oil warning lamp                   | ⑫ Fuel gauge              |
| ⑥ Transmission oil temperature warning lamp | ⑬ Hour meter              |
| ⑦ Battery charging warning lamp             | ⑭ Engine check lamp       |
| ⑧ Air cleaner filter warning light          | ⑮ Seat belt warning       |
| ⑨ Working light indicator                   | ⑯ OPSS warning(Optional)  |

## Easily adjustable suspension seat

An attractive and adjustable seat, based on a human engineering design, provides great comfort, safety and durability.



## Full floating overhead guard mount

The anti-vibration rubber is installed between the guard and truck frame to reduce the source of vibration and noise while driving. This not only reduces operator's fatigue but also increases safety.



## Endurance & Safety

### Strong overhead guard

The safety overhead guard exceeds EEC and ANSI regulations and protects the operator during hazardous jobs.



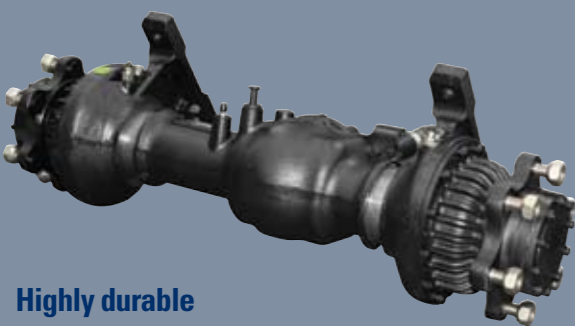
### Parking brake

Ratchet type parking brake requires less efforts from the operator to set.



### Highly durable split type drive axle

Powershift transmission provides fast travel speed and quiet travel under any heavy load condition, and boosts work efficiency.



## Enhanced safety through high durability!

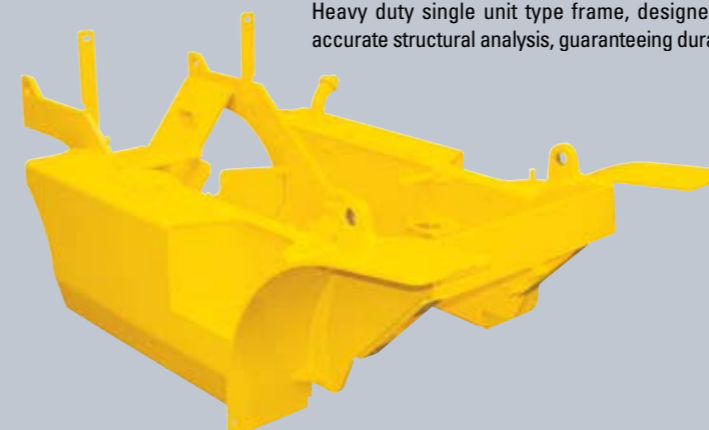
Safety and durability are priorities in the design of the equipment.

■ The photograph and the actual equipment may differ in appearance.



### Large footboard & hand grip

Wide "open" step offers convenience and safety when entering and exiting truck.



### Heavy duty single unit frame

Heavy duty single unit type frame, designed on the basis of accurate structural analysis, guaranteeing durability and safety.



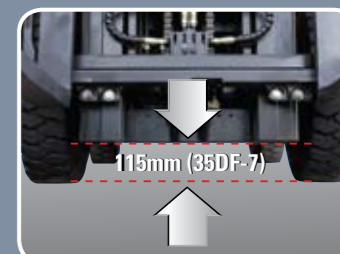
### Easy access of electrical Components

Various electric parts are centralized in dash board resulting in improvement in maintenance



### Bright, protected headlights

Bright, protected headlights is positioned for exceptional visibility.



### Ground clearance

The engine and transmission are assembled horizontally and positioned high in the frame to protect expansive components during operation on rugged surface.



**Electrically monitored air filter**

Air cleaner sensor alerts the operator of a restricted air filter and allows replacement before damage.



**Brake fluid reservoir**

Highly visible, easily accessible reservoir makes for quicker daily inspections.



**An accessible, compact fuse box for easy inspection**

*Centralized design for easy service!*

An ideal arrangement of component parts ensures easy access and convenience for maintenance.



■ The photograph and the actual equipment may differ in appearance.



**Easy change air cleaner**

The air filter is readily accessible for cleaning or replacement. (7inch Cyclone Type)



**Tool-less floor plate for serviceability.**



**Large open engine hood**

Highly accessible engine compartment assures fast and efficient maintenance.



**Hydraulic oil check**

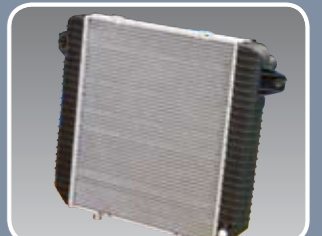


**Automatic self locking gas spring**

Engine compartment hood is held safely open by a self locking gas spring.



**Portable side cover**



**Aluminum radiator with superb protection against heat**



**Engine oil condition check**

Specification

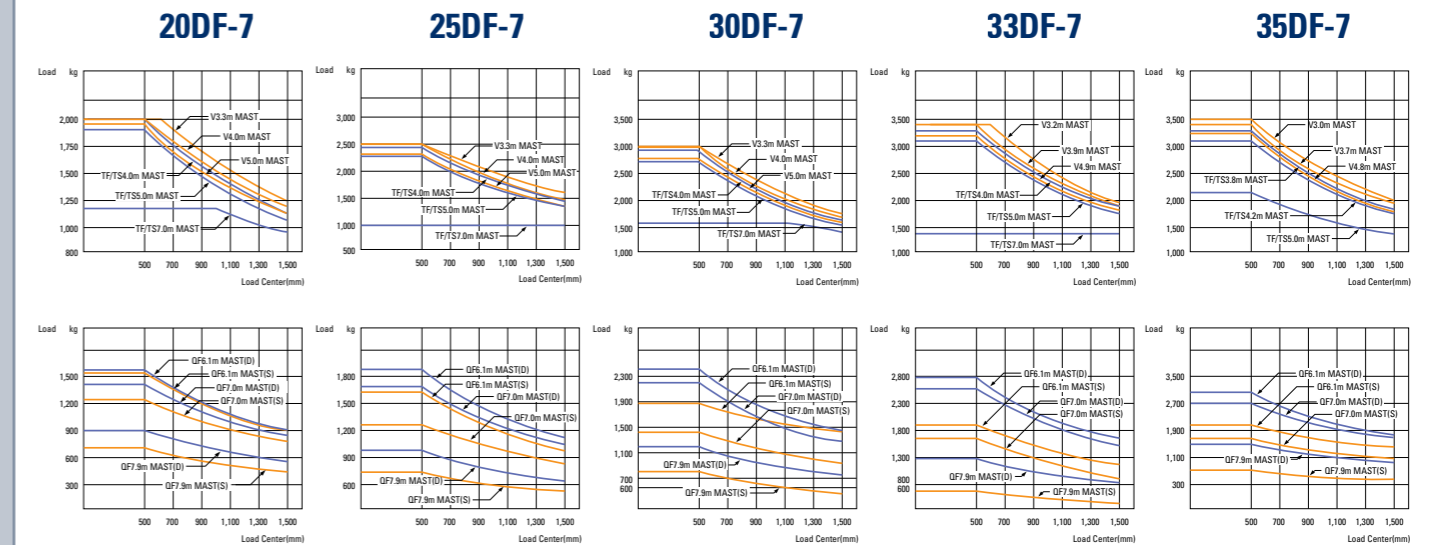
Mast Specification (20DF/25DF/30DF-7)

Mast Type	Maximum Fork Height (mm)	Overall Height Lowered (mm)	Free Lift Height				Tilt Angle deg	Load capacity w / o side shift at 500 mm LC				Load capacity w / side shift at 500 mm LC				Truck Weight Unload												
			With bkr(mm)		With / o bkr(mm)			Single Tire (kg)		Double Tire (kg)		Single Tire (kg)		Double Tire (kg)		Single Tire (kg)		Double Tire (kg)										
			20/25/30DF-7	20/25DF-7	30DF-7	20/25DF-7		30DF-7	Fwd	Bwd	20DF-7	25DF-7	30DF-7	20DF-7	25DF-7	30DF-7	20DF-7	25DF-7	30DF-7	20DF-7	25DF-7	30DF-7						
2-Stage limited free lift	V300	3,000	2,025	2,040	155	155	155	6	10	2,000	2,500	3,000	2,000	2,500	3,000	2,000	2,500	3,000	3,410	3,723	4,179	3,546	3,859	4,266				
	*V330	3,300	2,175	2,190	155	155	155	6	10	2,000	2,500	3,000	2,000	2,500	3,000	2,000	2,500	3,000	3,430	3,743	4,199	3,566	3,879	4,286				
	V350	3,500	2,275	2,290	155	155	155	6	10	2,000	2,500	3,000	2,000	2,500	3,000	2,000	2,500	3,000	3,447	3,760	4,217	3,583	3,896	4,304				
	V370	3,700	2,425	2,440	155	155	155	6	10	2,000	2,500	3,000	2,000	2,500	3,000	2,000	2,425	2,880	2,000	2,500	3,000	3,469	3,782	4,240	3,605	3,918	4,326	
	V400	4,000	2,575	2,590	155	155	155	6	10	2,000	2,460	3,000	2,000	2,500	3,000	2,000	2,425	2,880	2,000	2,425	2,920	3,499	3,812	4,271	3,635	3,948	4,357	
	V430	4,300	2,725	2,740	155	155	155	6	6	2,000	2,410	2,900	2,000	2,470	2,950	1,925	2,335	2,800	2,000	2,395	2,850	3,550	3,863	4,323	3,687	4,000	4,410	
2-Stage full free lift	VF290	2,900	2,025	2,040	845	860	1,377	1,314	6	6	2,000	2,500	3,000	2,000	2,500	3,000	2,000	2,500	3,000	2,000	2,500	3,000	3,456	3,769	4,219	3,593	3,906	4,306
	VF320	3,200	2,175	2,190	955	1,010	1,527	1,464	6	6	2,000	2,500	3,000	2,000	2,500	3,000	2,000	2,500	3,000	3,489	3,802	4,254	3,626	3,939	4,341			
	TF370/TS370	3,700	1,825	1,840	645	660	1,177	1,114	6	6	2,000	2,450	3,000	2,000	2,500	3,000	2,000	2,375	2,880	2,000	2,425	2,880	3,546	3,859	4,329	3,683	3,996	4,415
	TF400/TS400	4,000	1,925	1,940	745	760	1,277	1,214	6	6	2,000	2,400	2,880	2,000	2,470	2,950	1,925	2,325	2,780	2,000	2,395	2,850	3,570	3,883	4,353	3,707	4,020	4,439
	TF430/TS430	4,300	2,025	2,040	845	860	1,377	1,314	6	6	1,950	2,340	2,830	2,000	2,410	2,880	1,875	2,265	2,730	1,925	2,335	2,780	3,588	3,901	4,375	3,725	4,038	4,461
	TF450/TS450	4,500	2,125	2,140	945	960	1,477	1,414	6	6	1,930	2,310	2,780	1,960	2,380	2,830	1,855	2,235	2,680	1,885	2,305	2,730	3,610	3,923	4,401	3,747	4,060	4,487
3-Stage full free lift	TF470/TS470	4,700	2,175	2,190	955	1,010	1,527	1,464	6	6	1,890	2,260	2,750	1,930	2,340	2,790	1,815	2,185	2,650	1,855	2,265	2,690	3,624	3,937	4,415	3,761	4,074	4,501
	TF500/TS500	5,000	2,275	2,290	1,055	1,110	1,627	1,564	6	6	1,840	2,210	2,680	1,890	2,280	2,730	1,765	2,135	2,580	1,815	2,205	2,630	3,646	3,959	4,437	3,783	4,096	4,523
	TF550/TS550	5,500	2,475	2,490	1,295	1,310	1,827	1,764	6	6	1,770	1,600	2,580	1,810	2,210	2,630	1,695	1,525	2,480	1,735	2,135	2,530	3,685	3,998	4,481	3,822	4,135	4,567
	TF600/TS600	6,000	2,675	2,690	1,495	1,510	2,027	1,964	6	6	1,400	1,050	1,880	1,750	2,110	2,530	1,325	975	1,780	1,675	2,035	2,430	3,750	4,063	4,551	3,887	4,200	4,637
	QF610	6,115	2,177	2,175	997	955	1,512	1,449	3	3	1,480	1,580	1,780	1,490	1,810	2,270	1,405	1,505	1,680	1,415	1,735	2,170	3,992	4,305	4,731	4,130	4,443	4,807
	QF660	6,615	2,377	2,375	1,197	1,197	1,712	1,649	3	3	1,380	1,480	1,670	1,400	1,720	2,160	1,305	1,405	1,570	1,325	1,645	2,060	4,052	4,365	4,791	4,190	4,503	4,867
4-Stage full free lift	QF700	7,015	2,477	2,475	1,297	1,295	1,812	1,749	3	3	1,180	1,280	1,370	1,100	1,630	2,050	1,105	1,155	1,270	1,235	1,555	1,950	4,082	4,396	4,821	4,221	4,534	4,898
	QF745	7,465	2,627	2,625	1,447	1,445	1,962	1,899	3	3	900	950	1,050	1,210	1,520	1,920	825	875	950	1,135	1,445	1,820	4,128	4,441	4,867	4,327	4,580	4,943
	QF790	7,915	2,777	2,775	1,597	1,595	2,112	2,049	3	3	600	650	750	810	910	1,090	525	575	650	735	835	990	4,228	4,542	4,967	4,367	4,680	5,044

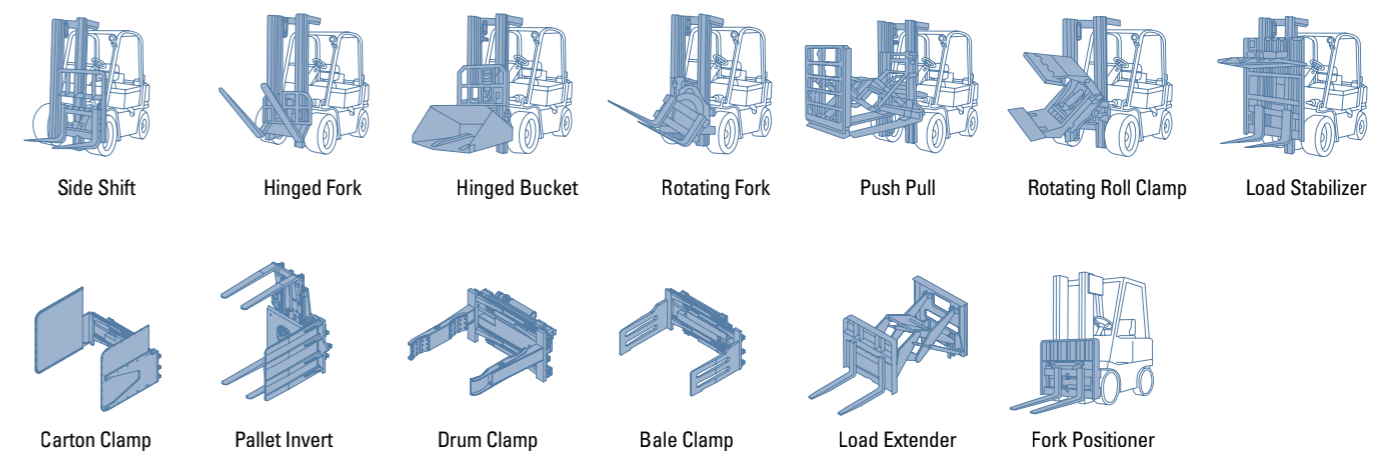
※ TS-Mast : Wide Visible 3-Stage Full Free Lift Mast with 2 Free Lift Cylinders.

\* Standard

Load Capacity



Various Attachments



Optional Items

- Fork (LxWxT)(mm)
  - 20DF/25DF-7
    - 900 X 100 X 45
    - 1,000 X 100 X 45
    - 1,200 X 100 X 45
    - 1,350 X 100 X 45
    - 1,500 X 100 X 45
    - 1,650 X 100 X 45
    - 1,800 X 100 X 45
  - 30DF/33DF-7
    - 900 X 122 X 45
    - 1,000 X 122 X 45
    - 1,200 X 122 X 45
    - 1,350 X 122 X 45
    - 1,500 X 122 X 45
    - 1,650 X 122 X 45
    - 1,800 X 122 X 45
    - 2,150 X 122 X 45
  - 35DF-7
    - 900 X 122 X 45
    - 1,150 X 122 X 45
    - 1,200 X 122 X 45
    - 1,350 X 122 X 45
    - 1,500 X 122 X 45
    - 1,650 X 122 X 45
    - 1,800 X 122 X 45
    - 1,970 X 122 X 45
    - 2,120 X 122 X 45
    - 2,400 X 122 X 45
- Overshoe(mm)
  - 1,300 / 1,500 / 1,700 / 1,800
- Tilting (6°/6°, 3°/3°)
- Sideshift
- Integrated Sideshift
- Attach Piping (3-Spool piping / 4-Spool piping)
- Hose - Reel (VF)
- Fuel Cap (Without key)
- Exhaust (Horizontal)
- Seat (Belt, Pocket, Arm rest, Hip rest)
- Tire (Solid, No-Marking, Double)
- Opss (Travel / Travel + Mast)
- MCV (3-Spool / 4-Spool)
- Master S/W
- Beacon Lamp
- Hazard S/W
- Rear Work Lamp
- Cabin & Heater
- Pre Cleaner
- TS-MAST

Mast Specification (33DF-7)

Mast Type	Maximum Fork Height (mm)	Overall Height Lowered (mm)	Free Lift Height		Tilt Angle deg	Load capacity w / o side shift at 500 mm LC		Load capacity w / side shift at 500 mm LC		Truck Weight Unload			
			With bkr(mm)	With / o bkr(mm)		Single Tire (kg)	Double Tire (kg)	Single Tire (kg)	Double Tire (kg)	Single Tire (kg)	Double Tire (kg)		
			33DF-7	33DF-7		33DF-7	33DF-7	33DF-7	33DF-7	33DF-7	33DF-7		
2-Stage limited free lift	V290	2,900	2,040	155	155	6	10	3,300	3,300	3,300	4,390	4,481	
	*V320	3,200	2,190	155	155	6	10	3,300	3,300	3,300	4,414	4,505	
	V340	3,400	2,290	155	155	6	10	3,300	3,300	3,300	4,430	4,521	
	V360	3,600	2,440	155	155	6	10	3,300	3,300	3,300	4,454	4,545	
	V380	3,800	2,590	155	155	6	10	3,300	3,300	3,300	4,486	4,577	
	V420	4,200	2,740	155	155	6	6	3,300	3,300	3,275	3,300	4,539	4,630
2-Stage full free lift	VF290	2,900	2,090	910	1,269	6	6	3,300	3,300	3,300	4,429	4,520	
	VF320	3,200	2,240	1,060	1,419	6	6	3,300	3,300	3,300	4,464	4,555	
	TF370/TS370	3,700	1,890	710	1,069	6	6	3,300	3,300	3,300	4,571	4,662	
	TF400/TS400	4,000	1,990	810	1,169	6	6	3,275	3,300	3,200	3,300	4,593	4,684
	TF430/TS430	4,300	2,090	910	1,269	6	6	3,300	3,300	3,150	3,225	4,614	4,705
	TF450/TS450	4,500	2,190	1,010	1,369	6	6	3,150	3,250	3,075	3,175	4,636	4,727
3-Stage full free lift	TF470/TS470	4,700	2,240	1,060	1,419	6	6	3,100	3,200	3,025	3,125	4,649	4,740
	TF500/TS500	5,000	2,340	1,160	1,519	6	6	3,050	3,125	2,950	3,050	4,672	4,763
	TF550/TS550	5,500	2,540	1,360	1,719	6	6	2,700	3,000	2,450	2,925	4,716	4,807
	TF600/TS600	6,000	2,740	1,560	1,919	6	6	1,750	2,900	1,450	2,825	4,788	4,879
	QF610	6,115	2,225	1,045	1,449	3	3	1,950	2,800	1,850	2,730	4,919	4,965
	QF660	6,615	2,425	1,245	1,649	3	3	1,850	2,700	1,750	2,600	4,979	5,056
4-Stage full free lift	QF700	7,015	2,525	1,345	1,749	3	3	1,550	2,580	1,450	2,480	5,009	5,085
	QF745	7,465	2,675	1,495	1,899	3	3	1,000	2,440	900	2,340	5,051	5,128
	QF790	7,915	2,825	1,645	2,049	3	3	600	1,300	500	1,200	5,155	5,232

※ TS-Mast : Wide Visible 3-Stage Full Free Lift Mast with 2 Free Lift Cylinders.

\* Standard