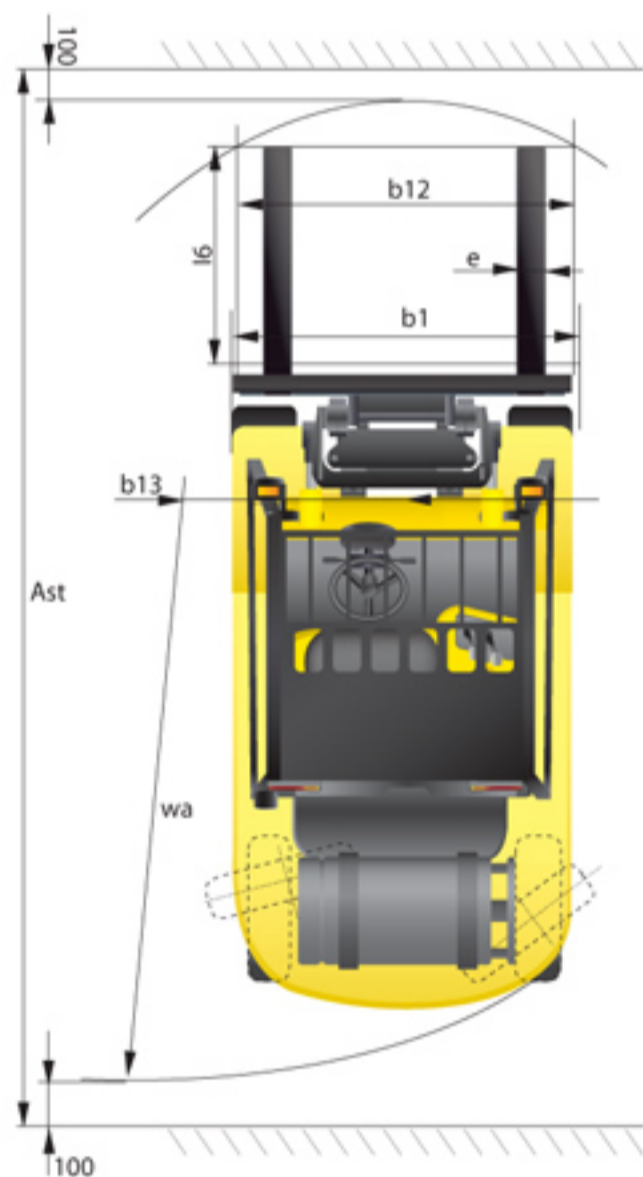


Dimension



Specification

Identification			
1.1	Manufacturer	Hyundai	Hyundai
1.2	Manufacturer's type designation	20L-7	25L-7
1.3	Drive: electric (battery or mains), diesel, petrol, fuel gas, manual	FUEL GAS / PETROL	FUEL GAS / PETROL
1.4	Type of operation: hand, pedestrian, standing, seated, order-picker	seated	seated
1.5	Load capacity / rated load	2,000	2,500
1.6	Load center distance	500	500
1.8	Load distance, center of drive axle to fork	461	464
1.9	Wheelbase	1,650	1,700
Weights			
2.1	Service weight	3,476	3,766
2.2	Axle loading, loaded front/rear	4,763	5,095
2.3	Axle loading, unloaded front/rear	1,599	1,539
Wheels, Chassis			
3.1	Tire: solid rubber, superelastic, pneumatic, polyurethane	Pneumatic	Pneumatic
3.2	Tires size, front (D x width)	7.00-12-12PR	7.00-12-12PR
3.3	Tires size, rear (D x width)	6.00-9-10PR	6.00-9-10PR
3.5	Wheels, number front x rear (x=driven wheels)	2 x 2	2 x 2
3.6	Track width, front	965	965
3.7	Track width, rear	980	980
Basic Dimensions			
4.1	Mast / fork carriage tilt forward / backward (α/β) degrees	6 / 10	6 / 10
4.2	Lowered mast height	h1 mm	2,175
4.3	Free lift	h2 mm	155
4.4	Lift height	h3 mm	3,300
4.5	Extended mast height	h4 mm	4,485
4.7	Overhead load guard (cab) height	h5 mm	2,160
4.8	Seat height / standing height	h7 mm	1,086
4.12	Coupling height	h10 mm	283
4.19	Overall length	l1 mm	3,557
4.20	Length to face of forks	l2 mm	2,527
4.21	Overall width	b1 mm	1,160
4.22	Fork dimensions (hook type)	s / e / l mm	1,050 x 100 x 45
4.23	Fork carriage ISO 2328, class / type A,B	II / A	II / A
4.24	Fork-carriage width	b12 mm	1,060
4.31	Ground clearance, loaded, under mast	m1 mm	127
4.32	Ground clearance, centre of wheelbase	m2 mm	171
4.33	Right Angle Stacking Aisle for Pallets 1,000x1,200(W)	Ast mm	3,913
4.34	Right Angle Stacking Aisle for Pallets 800x1,200(W)	Ast mm	4,133
4.35	Turning radius	Wa mm	2,252
4.36	Smallest pivot point distance	b13 mm	722
Performance Data			
5.1	Travel speed, unloaded	km/h	18.1
5.2	Lift speed, loaded/unloaded	mm/s	580 / 610
5.3	Lowering speed, loaded/unloaded	mm/s	500 / 450
5.5	Drawbar pull, loaded	kg	1,867
5.7	Gradient performance, loaded/unloaded	%	35.8 / 24.3
5.9	Acceleration time, loaded/unloaded (10m)	sec	N/A
5.10	Service brake		Mechanic / Hydraulic
Engine			
6.1	Engine manufacturer / type	HMC BETA	HMC BETA
6.2	Engine power acc. to ISO 1585	kW	37
6.3	Rated speed	1/min	2,450
6.4	No. of cylinder / cubic capacity	anz/cil	4 / 1,975
6.5	Fuel consumption acc. To VDI cycle	ℓ / h	N/A
Other Details			
8.1	Type of drive control	Power Shift	Power Shift
8.2	Operating pressure	bar	225 / 168
8.3	Oil volume	ℓ	30
8.4	Noise	db(A)	80



Some of the photos may include optional equipment

We build a better future

20L/25L/30L-7

FORKLIFT TRUCKS Environmentally-Friendly



GLOBAL MACHINERY

Официальный дистрибьютор техники Hyundai Heavy Industries в России

ООО «Глобал Машинери»

125502, Россия, г. Москва, улица Петрозаводская, дом 9, корп.2, офис 8

тел./факс: (495) 775-76-55, info@gm-rus.org

www.pogruzchik-hyundai.ru



20L | 25L | 30L -7

New Criterion of Forklift Trucks

Hyundai introduces a new line of 7-series LPG forklift trucks. Excellent power and performance makes your business more profitable.



OPSS (Operator Presence Sensing System)
Control of mast tilting, lifting and lowering is not possible through operation of the appropriate control when the operator is not in the normal position.(Option)

■ Some of the photos may include optional equipment.

High Power & Performance

Powerful Engine HMC BETA Engine

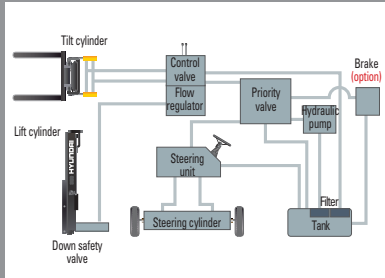
Market approved quality of HMC BETA engine ensures incomparable performance, durability and additional value to the machine. 37kW of the engine is more than enough to suit any work, not just with normal 37kW but with special attachments requiring high power as well. (EPA/CARB Tier-3 Certified)

37kW/2,450rpm



State-of-the-art hydraulic system

The latest large-capacity hydraulic system reacts quickly during operation, and a low-noise control valve increases both efficiency and durability.



Ability of best, The new *master* on the job-site!

Smooth running, efficient and ergonomically designed, 20/25/30L-7 series are made to meet your needs.

■ Some of the photos may include optional equipment.



Fast and stable performance

Being able to quickly raise and lower the mast, as well as tilt it forward and backward, provides the best operational conditions during unloading. When the truck is fully loaded, mast lowering speed is carefully controlled to ensure safety by the down control valve.

Faster travel speed & gradeability

The powerful high-output engine provides greater acceleration, better gradeability and faster travel speed on any tough terrain or slope.

Gradeability(Loaded)		Travel speed(Unloaded)	
20L-7 : 19.7°	30L-7 : 14.1°	20L-7 : 18.1km/h	30L-7 : 19.1km/h
25L-7 : 17.3°		25L-7 : 18.1km/h	



Increased mast tilting angle

Utilizing the mast tilting angle of 6 degrees forward and 10 degrees backward, the operator can safely and rapidly perform loading and unloading jobs.



Wet disc brake system

The adoption of Wet disc type brake improves brake performance. Brake pedal effort is improved about 45% at 20% slope and Wet disc brakes have service intervals 5 times longer than conventional.



Fully hydrostatic power steering

A hydraulic steering system always guarantees smooth and flexible steering, preventing overrun and kick-back.

Comfortable Operation



Adjustable steering wheel

Steering wheel with horn button can be adjusted by a lever on the right-hand side for the most comfortable operator position.



Easy and safe shift lever

A single lever on the left side of the steering column gives the operator fast, easy control of direction. The engine can be started in case of neutral position of this lever.



Multi-function switch lever

Multi-functional switch lever gives easy access to lights and horn.



Quick response of operating control levers

Only minimal operator's effort is required for precise, safe and productive control.



■ Some of the photos may include optional equipment.

Ergonomics driving space design!

A design based on human engineering relieves fatigue and increase operator's efficiency.



Ergonomically positioned pedals

Based on human engineering, the accelerator, brake and inching pedals are optimally positioned for convenience while operating the equipment.



Cup holder & console box

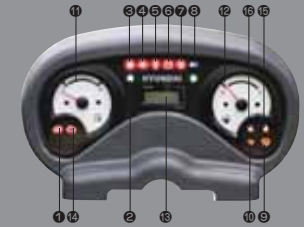
Additional storage spaces are located inside the operating space for operator's convenience.



New high visibility for safe operation

The operator is able to work with increased safety and accuracy due to a wider view mast.

Operator friendly gauges and water-resistant monitor panel



- ① Parking brake lamp
- ② Directional indicators
- ③ Fuel warning lamp
- ④ Engine oil warning lamp
- ⑤ Transmission oil temperature warning lamp
- ⑥ Battery charging warning lamp
- ⑦ Air cleaner filter warning light
- ⑧ Working light indicator
- ⑨ Water separator lamp
- ⑩ Pre-heater indicator
- ⑪ Water temperature gauge
- ⑫ Fuel gauge
- ⑬ Hour meter
- ⑭ Engine check lamp
- ⑮ Seat belt warning
- ⑯ DPS warning

Easily adjustable suspension seat

An attractive and adjustable seat, based on a human engineering design, provides great comfort, safety and durability.



Full-floating headguard mount

The anti-vibration rubber is installed between the guard and truck frame to reduce the source of vibration and noise while driving. This not only reduces operator's fatigue but also increases safety.



Endurance & Safety

Strong overhead guard

The safety overhead guard meets EEC and ANSI regulations and protects the operator during hazardous jobs.



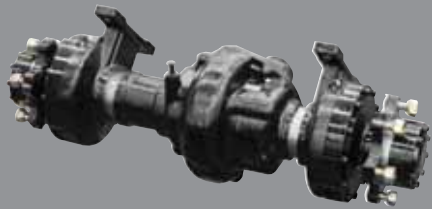
Parking brake

Ratchet type parking brake requires less efforts from the operator to set.



Highly durable split type drive axle

Powershift transmission provides fast travel speed and quiet travel under any heavy load condition, and boosts work efficiency.



Danger-free through high durability!

Safety and durability are priorities in the design of the equipment.



■ Some of the photos may include optional equipment.

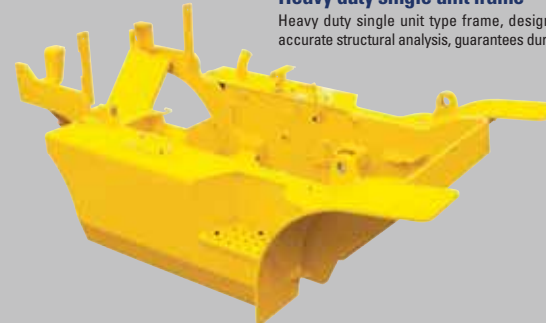


Large footboard & hand grip

Wide "open" step offers convenience and safety when entering and exiting truck.

Heavy duty single unit frame

Heavy duty single unit type frame, designed on the basis of accurate structural analysis, guarantees durability and safety.



Improvement in maintenance of electric parts

Various electric parts are centralized in dash board resulting in improvement in maintenance



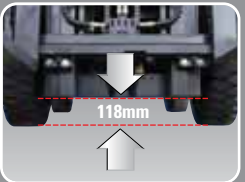
Expansion bellows

The expansion bellows absorbs vibration and reduces noise generated from the exhaust gas system and also extends the life cycle of exhaust gas system.



Bright, protected headlights

Bright, protected headlights is positioned for exceptional visibility.



Ground clearance

The engine and transmission are assembled horizontally and positioned high in the frame to protect expansive components during operation on rugged surface.

Durability **Easy Maintenance**



Electrically monitored air filter

Air cleaner sensor alerts the operator of a restricted air filter and allows replacement before damage.



Easy maintenance oil check

The T/M oil level can be checked easily without any disassembly.



Brake fluid reservoir

Highly visible, easily accessible reservoir makes for quicker daily inspections.



An accessible, compact fuse box for easy inspection



Centralized design for easy service!

An ideal arrangement of component parts ensures easy access and convenience for maintenance.



Easy change air cleaner

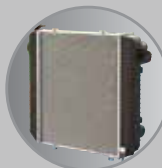
The air filter is readily accessible for cleaning or replacement. (6inch Cyclone Type)



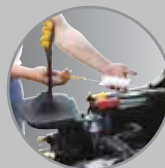
Portable side cover



Rotational battery installation



Aluminum radiator with superb protection against heat



Engine oil condition check



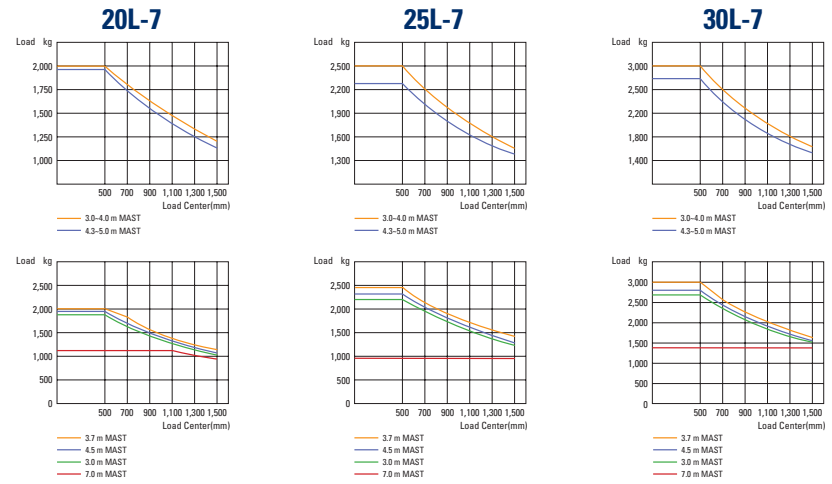
One touch(tool-less) floor plate

Mast Specification

Mast Type	Maximum Fork Height mm	Overall Height Lowered						Free Lift			Tilt Angle deg	Load Capacity w / o side shift at 500mm LC					Load Capacity w / side shift at 500mm LC					Truck Weight Unload						
		mm		With bkr		W/o bkr		Fwd	Bwd	Single Tire (kg)		Double Tire (kg)			Single Tire (kg)		Double Tire (kg)			Single Tire (kg)		Double Tire (kg)						
		20/25L-7	30L-7	20/25L-7	30L-7	20/25L-7	30L-7			20L-7		25L-7	30L-7	20L-7	25L-7	30L-7	20L-7	25L-7	30L-7	20L-7	25L-7	30L-7	20L-7	25L-7	30L-7			
2-Stage limited free lift	V300	3,000	2,825	2,040	155	155	155	155	6	10	2,000	2,500	3,000	2,000	2,500	3,000	2,000	2,500	3,000	3,000	3,000	3,000	3,457	3,747	4,247	3,583	3,883	4,334
	V330	3,300	2,175	2,190	155	155	155	155	6	10	2,000	2,500	3,000	2,000	2,500	3,000	2,000	2,500	3,000	3,000	3,000	3,476	3,766	4,268	3,812	3,902	4,354	
	V350	3,500	2,275	2,290	155	155	155	155	6	10	2,000	2,500	3,000	2,000	2,500	3,000	2,000	2,500	3,000	3,000	3,000	3,483	3,783	4,285	3,829	3,919	4,372	
	V370	3,700	2,425	2,440	155	155	155	155	6	10	2,000	2,500	3,000	2,000	2,500	3,000	2,000	2,500	3,000	3,000	3,000	3,515	3,805	4,308	3,851	3,941	4,395	
	V400	4,000	2,575	2,590	155	155	155	155	6	10	2,000	2,450	3,000	2,000	2,450	3,000	2,000	2,400	2,950	2,975	3,545	3,835	4,339	3,881	3,971	4,425		
	V430	4,300	2,725	2,740	155	155	155	155	6	6	2,000	2,400	2,925	2,000	2,475	3,000	1,950	2,350	2,875	2,000	2,450	2,925	3,597	3,887	4,392	3,733	4,023	4,478
	V450	4,500	2,875	2,890	155	155	155	155	6	6	2,000	2,350	2,875	2,000	2,425	2,950	1,930	2,300	2,825	2,000	2,400	2,875	3,619	3,909	4,414	3,755	4,045	4,501
2-Stage full free lift	V470	4,700	2,975	2,990	155	155	155	155	6	6	1,975	2,325	2,825	2,000	2,400	2,925	1,900	2,275	2,750	2,000	2,375	2,825	3,633	3,923	4,430	3,770	4,060	4,516
	V500	5,000	3,125	3,140	155	155	155	155	6	6	1,925	2,250	2,775	1,925	2,250	2,775	1,925	2,250	2,775	2,000	2,150	2,625	3,665	3,945	4,452	3,792	4,082	4,538
	VF290	2,922	2,025	2,040	845	860	1,377	1,314	6	6	2,000	2,500	3,000	2,000	2,500	3,000	2,000	2,500	3,000	3,000	3,000	3,922	3,732	4,288	3,639	3,929	4,374	
	TF230	3,222	2,175	2,190	995	1,010	1,527	1,464	6	6	2,000	2,500	3,000	2,000	2,500	3,000	2,000	2,500	3,000	3,000	3,000	3,538	3,626	4,323	3,673	3,963	4,409	
	TF370/TS370	3,700	1,825	1,840	845	860	1,177	1,114	6	6	2,000	2,480	3,000	2,000	2,500	3,000	2,000	2,410	2,900	2,000	2,500	2,990	3,593	3,883	4,397	3,730	4,020	4,463
	TF400/TS400	4,000	1,925	1,940	745	760	1,277	1,214	6	6	2,000	2,400	2,925	2,000	2,475	3,000	1,950	2,250	2,750	2,000	2,450	2,900	3,617	3,907	4,422	3,754	4,044	4,509
	TF430/TS430	4,300	2,025	2,040	845	860	1,377	1,314	6	6	1,975	2,350	2,850	2,000	2,425	2,925	1,900	2,300	2,775	2,000	2,400	2,825	3,625	3,925	4,444	3,772	4,062	4,530
3-Stage full free lift	TF450/TS450	4,500	2,125	2,140	945	960	1,477	1,414	6	6	1,950	2,300	2,800	2,000	2,375	2,875	1,875	2,250	2,725	1,950	2,350	2,775	3,657	3,947	4,469	3,794	4,084	4,555
	TF470/TS470	4,700	2,175	2,190	895	1,010	1,527	1,464	6	6	1,925	2,250	2,775	1,925	2,250	2,775	1,850	2,200	2,675	1,925	2,300	2,725	3,670	3,960	4,483	3,807	4,097	4,569
	TF500/TS500	5,000	2,275	2,290	1,095	1,110	1,627	1,564	6	6	1,875	2,200	2,700	1,925	2,225	2,725	1,800	2,150	2,600	1,900	2,225	2,675	3,693	3,983	4,506	3,830	4,120	4,592
	TF550/TS550	5,500	2,475	2,490	1,295	1,310	1,827	1,764	6	6	1,800	2,100	2,600	1,850	2,200	2,675	1,725	1,950	2,425	1,825	2,150	2,575	3,722	4,022	4,550	3,869	4,159	4,636
	TF600/TS600	6,000	2,675	2,690	1,495	1,510	2,027	1,964	6	6	1,450	1,850	1,300	1,775	2,100	2,575	1,400	1,550	1,775	2,050	2,475	3,797	4,027	4,620	3,934	4,224	4,706	
	DF610	6,115	2,177	2,175	39.3	37.6	59.5	57.0	3	3	1,450	1,600	1,800	1,500	1,850	2,350	1,380	1,530	1,710	1,410	1,750	2,220	4,007	4,297	4,767	4,145	4,433	4,854
	DF660	6,615	2,377	2,375	47.1	47.0	67.4	64.9	3	3	1,350	1,500	1,700	1,450	1,750	2,200	1,280	1,430	1,610	1,350	1,650	2,070	4,066	4,356	4,827	4,204	4,492	4,914
DF700	7,015	2,477	2,475	51.1	51.0	71.3	68.9	3	3	1,300	1,400	1,500	1,350	1,700	2,150	1,230	1,330	1,420	1,260	1,600	2,020	4,097	4,387	4,857	4,235	4,523	4,944	
DF745	7,465	2,627	2,625	57.0	56.9	77.2	74.8	3	3	1,000	1,100	1,200	1,300	1,600	2,050	940	1,040	1,120	1,220	1,510	1,930	4,143	4,433	4,903	4,281	4,569	4,990	
DF790	7,915	2,777	2,775	62.9	62.8	83.1	80.7	3	3	600	700	750	800	1,000	1,100	550	650	680	820	920	990	4,243	4,533	5,004	4,381	4,669	5,091	

* Standard

Load Capacity



Optional Items

- CABIN & HEATER
- SIDE SHIFT
- INTEGRAL SIDE SHIFT
- FORK
900mm, 1000mm, 1200mm, 1350mm, 1500mm, 1650mm, 1800mm
- OVER SHOE
1300mm, 1500mm, 1700mm, 1800mm
- TILTING
6/6°, 3/3°
- TIRE
Cushion, No-marking, Double
- SEAT
Pocket, Arm Rest, Hip Rest
- LPG CLAMP
Swing Out, Swing Down
- M.C.V
4-Spool
- ATTACH PIPING
3 Spool-piping, 4 Spool-piping
- MASTER SWITCH
- BEACON LAMP
- HAZARD SWITCH
- WORK LAMP
- OPSS
Taravel, Taravel + Mast
- BRAKE PEDAL
Hydraulic Booster (w/o Accumulator)